

## NORDIC PREMIUM METAL CEILINGS VECTORIAL CEILING SYSTEM DATASHEET

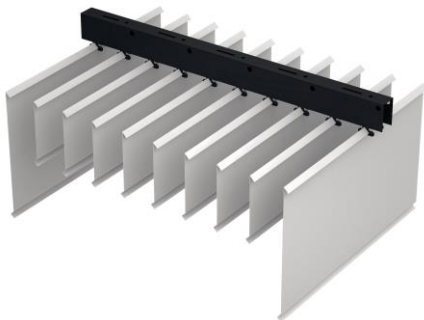
### Technical Info:

Product	: aluminium or galvanised steel
Module	: V100 – V200
Thickness	: 0.50 - 0.70 mm
Surface	: electrostatic powder coated
Perforation	: none or $\varnothing$ 1.8-2.5mm hole diameter
Suspension sys	: main carrier profile
Fire Resistance	: class A as steel
Color	: RAL 9016 - standard white or desired RAL colors

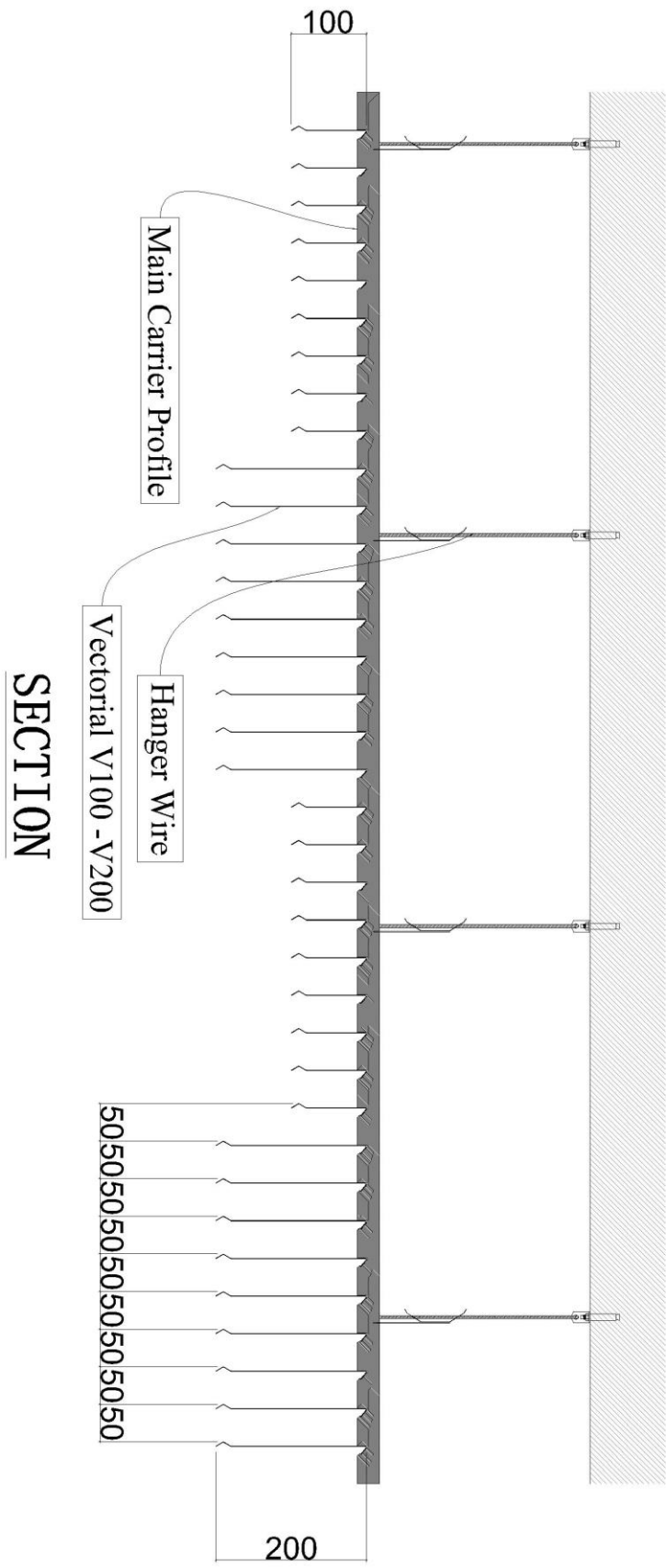
### Specification:

Baffle and vectorial ceiling systems are made of vertically installed panels in different sizes. A light - weight and floating ceiling system which visually reduces the room height whilst retaining the actual room volume. It is specially designed to hide services installations such as pipes, lighting and ac/ hvac etc. with a directional approach. Panels are floating on the ceiling with a linear view and offering a spacious environment. Also baffles with wooden look are available so that the users have more durable and easy maintenance ceiling elements. Different design options can be provided by changing the base sizes of the u profiles, height and the gap between to baffles. Both baffle and vectorial systems enable easy access to the plenum and easy demountability.

### VISUAL

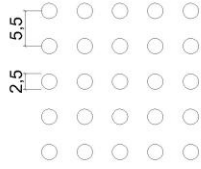






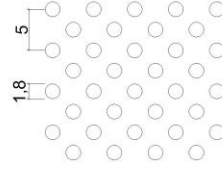
## PERFORATIONS

full 2.5 mm perf.



Hole Diameter :  $\varnothing$  2.5 mm.  
Axis (center to center) : 5.5 mm. , 90°  
Perforation : Regular

full diagonal 1.8 mm perf.



Hole Diameter :  $\varnothing$  1.8 mm.  
Axis (center to center) : 5 mm. , 45°  
Perforation : Diagonal

